

TELPAD II

SPECIFICATION

THE TELPAD II CAN BE USED AS AN ENTRY OR EXIT KEYPAD.

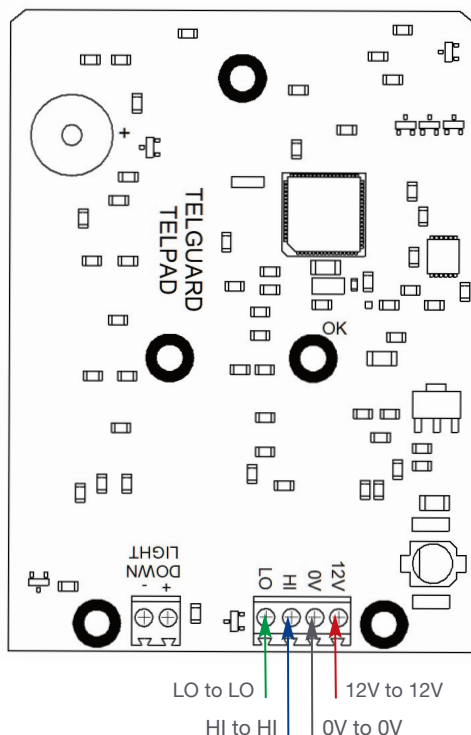
FEATURES AND BENEFITS

- Simply connect to an existing unit, Alert-Guard or Hub via 4 cores.
- The TelPad II can either:
 - Absorb the existing codes of panel it's connected to (*the only option for Optimus*)
 - Be programmed with separate codes to differentiate between exit and entry (*Telguard range only*).
- All programming can be achieved remotely, therefore no site visits are required.
- A low profile, moulded anthracite back box and a stainless steel faceplate.
- Trade and Clear buttons as standard.

CONNECTING YOUR TELPAD II

- TelPad II connects via 4 cores ~ 12V to 12V, 0V to 0V, HI to HI and LO to LO.

These connections are identical across our entire range of Telguard and Optimus products.



PROGRAMMING

The level of programming available will be determined by what the TelPad II is connected to:

- OPTIMUS**
The Telpad II will mirror the programming of the Optimus panel it is connected to.
- TELGUARD ~ ML OR HY-CAN RANGE**
The Telpad II can either mirror the programming of the chosen panel or have separate codes.
- STANDALONE ~ HUB CONNECTION**
Programming allowance as the Telguard range:
 - 400 Access Codes
 - 900+ Authorised incoming numbers
 - Internal Time Clock with 9 time zones
 - Activity Log
 - SMS Alerts

APPS

Programme any of our units using one of our apps!

Any codes programmed via the app will be applied to both the TelPad and the panel it is connected to.

Simply visit www.commtel.tech/apps to find out which one is right for you or scan the QR code.

